



TEST REPORT

Report Number.....: **ZKT-2210127515E**

Date of Test.....: Oct. 12, 2022 to Oct. 17, 2022

Date of issue.....: Oct. 17, 2022

Total number of pages.....: 33

Test Result: PASS

Testing Laboratory.....: **Shenzhen ZKT Technology Co., Ltd.**

Address: 1/F, No. 101, Building B, No. 6, Tangwei Community Industrial Avenue, Fuhai Street, Bao'an District, Shenzhen, China

Applicant's name: **Feishiji (Shenzhen) Technology Co., Ltd**

Address: A205 Xingyu Garden, Baoyuan Road, Nanchang Community, Xixiang Street, Bao'an District, Shenzhen

Manufacturer's name: **Feishiji (Shenzhen) Technology Co., Ltd**

Address: A205 Xingyu Garden, Baoyuan Road, Nanchang Community, Xixiang Street, Bao'an District, Shenzhen

Test specification:

Standard.....: EN 55032:2015+A11:2020, EN 55035:2017+A11:2020
EN IEC 61000-3-2:2019/A1:2021,
EN 61000-3-3:2013/A2:2021/AC:2022-01
EN 61000-4-2:2009, EN IEC 61000-4-3:2020,
EN 61000-4-4:2012, EN 61000-4-5:2014+A1:2017,
EN 61000-4-6:2014, EN 61000-4-8:2010,
EN IEC 61000-4-11:2020

Test procedure.....: /

Non-standard test method: N/A

Test Report Form No.....: TRF-EL-144 V0

Test Report Form(s) Originator.....: ZKT Testing

Master TRF: Dated: 2020-01-06

This device described above has been tested by ZKT, and the test results show that the equipment under test (EUT) is in compliance with the 2014/30/EU Directive requirements. And it is applicable only to the tested sample identified in the report.

This report shall not be reproduced except in full, without the written approval of ZKT, this document may be altered or revised by ZKT, personal only, and shall be noted in the revision of the document.

Product name.....: **Car charger**

Trademark: N/A

Model/Type reference.....: PEC-04

FSJ-001, FSJ-002, FSJ-003, FSJ-004, FSJ-005, FSJ-006,
FSJ-007, FSJ-008, FSJ-009, PEC-04

Ratings.....: Input:DC 12-24V
Output:DC 5V



Testing procedure and testing location:

Testing Laboratory.....: Shenzhen ZKT Technology Co., Ltd.

**Address.....: 1/F, No. 101, Building B, No. 6, Tangwei Community
Industrial Avenue, Fuhai Street, Bao'an District,
Shenzhen, China**

Tested by (name + signature).....: Jim Liu

Reviewer (name + signature).....: Alan Zheng

Approved (name + signature).....: Lake Xie





TABLE OF CONTENT

	Page
1. VERSION	5
2. GENERAL INFORMATION	6
2.1 Description of Device (EUT)	6
2.2 Tested System Details	6
2.3 Test Facility	6
2.4 MEASUREMENT UNCERTAINTY	6
2.5 Test Instrument Used	7
3. CONDUCTED EMISSIONS	9
3.1 Block Diagram Of Test Setup	9
3.2 Limit	9
3.3 Test procedure	9
3.4 Test Result	10
4. RADIATED EMISSIONS TEST	11
4.1 Block Diagram Of Test Setup	11
4.2 Limits	11
4.3 Test Procedure	12
4.4 Test Results	13
5. HARMONIC CURRENT EMISSION TEST	15
5.1 Block Diagram of Test Setup	15
5.2 Test Standard	15
5.3 Operating Condition of EUT	15
5.3.1 Setup the EUT as shown in Section 6.1.	15
5.3.2 Turn on the power of all equipment.	15
5.3.3 Let the EUT work in test mode and test it.	15
5.4 Test Procedure	15
5.5 Test Results	15
VOLTAGE FLUCTUATIONS & FLICKER TEST	18
6.1 Block Diagram of Test Setup	18
6.2 Test Standard	18
6.3 Operating Condition of EUT	18
6.4 Test Procedure	18
6.5 Test Results	18
7. IMMUNITY TEST OF GENERAL THE PERFORMANCE CRITERIA	19
8. ELECTROSTATIC DISCHARGE (ESD)	20
8.1 Test Specification	20
8.2 Block Diagram of Test Setup	20
8.3 Test Procedure	20
8.4 Test Results	21
9. CONTINUOUS RF ELECTROMAGNETIC FIELD DISTURBANCES(RS)	22
9.1 Test Specification	22
9.2 Block Diagram of Test Setup	22
9.3 Test Procedure	23



9.4 Test Results	23
10. ELECTRICAL FAST TRANSIENTS/BURST (EFT)	24
10.1 Test Specification	24
10.2 Block Diagram of EUT Test Setup	24
10.3 Test Procedure	24
10.4 Test Results	24
11. SURGES IMMUNITY TEST	25
11.1 Test Specification	25
11.2 Block Diagram of EUT Test Setup	25
11.3 Test Procedure	25
11.4 Test Result	25
12. CONTINUOUS INDUCED RF DISTURBANCES (CS)	26
12.1 Test Specification	26
12.2 Block Diagram of EUT Test Setup	26
12.3 Test Procedure	26
12.4 Test Result	26
13. MAGNETIC FIELD IMMUNITY TEST	27
13.1 Block Diagram of Test Setup	27
13.2 Test Standard	27
13.3 Severity Levels and Performance Criterion	27
13.3.1 Severity level	27
13.3.2 Performance criterion: B	27
13.4 EUT Configuration on Test	28
13.5 Operating Condition of EUT	28
13.6 Test Procedure	28
13.7 Test Results	28
14. VOLTAGE DIPS AND INTERRUPTIONS (DIPS)	28
14.1 Test Specification	28
14.2 Block Diagram of EUT Test Setup	28
14.3 Test Procedure	29
14.4 Test Result	29
15. EUT PHOTOGRAPHS	30
16. EUT TEST PHOTOGRAPHS	33



1. VERSION

Report No.	Version	Description	Approved
ZKT-2210127515E	Rev.01	Initial issue of report	Oct. 17, 2022



2. GENERAL INFORMATION

2.1 Description of Device (EUT)

EUT : Car charger

Trademark : N/A

Model Number : FSJ-001, FSJ-002, FSJ-003, FSJ-004, FSJ-005, FSJ-006, FSJ-007, FSJ-008, FSJ-009, PEC-04

Model Difference : N/A

Power Supply : Input:DC 12-24V
Output:DC 5V

The highest frequency of the internal sources of the EUT is (less than 108)MHz:

- ☒ less than 108 MHz, the measurement shall only be made up to 1 GHz.
- ☐ between 108 MHz and 500 MHz, the measurement shall only be made up to 2 GHz.
- ☐ between 500 MHz and 1 GHz, the measurement shall only be made up to 5 GHz.
- ☐ above 1 GHz, the measurement shall be made up to 5 times the highest frequency or 6 GHz, whichever is less.

Note: N/A

2.2 Tested System Details

None.

2.3 Test Facility

Site Description

Name of Firm : Shenzhen ZKT Technology Co., Ltd.

Site Location : 1/F, No. 101, Building B, No. 6, Tangwei Community Industrial Avenue, Fuhai Street, Bao'an District, Shenzhen, China

2.4 MEASUREMENT UNCERTAINTY

Where relevant, the following measurement uncertainty levels have been estimated for tests performed on the Product as specified in CISPR 16-4-2. This uncertainty represents an expanded uncertainty expressed at approximately the 95% confidence level using a coverage factor of k=2.

Test item	Value (dB)
Conducted Emission (150K-30MHZ)	3.20
Radiated disturbance30MHz-1000MHz	4.80
Radiated disturbance1000MHz-6000MHz	5.10



2.5 Test Instrument Used

Conducted emissions Test

Item	Kind of Equipment	Manufacturer	Type No.	Serial No.	Last calibration	Calibrated until
1	LISN	R&S	ENV216	101471	Oct. 17, 2022	Oct. 21, 2023
2	LISN	CYBERTEK	EM5040A	E1850400149	Oct. 17, 2022	Oct. 21, 2023
3	Test Cable	N/A	C01	N/A	Oct. 17, 2022	Oct. 21, 2023
4	Test Cable	N/A	C02	N/A	Oct. 17, 2022	Oct. 21, 2023
5	EMI Test Receiver	R&S	ESCI3	101393	Oct. 17, 2022	Oct. 21, 2023
6	Absorbing Clamp	DZ	ZN23201	15034	Oct. 17, 2022	Oct. 21, 2023
7	EMC Software	Frad	EZ-EMC	Ver.EMC-CON 3A1.1	\	\

Radiated emissions Test (966 chamber)

Item	Kind of Equipment	Manufacturer	Type No.	Serial No.	Last calibration	Calibrated until
1	Bilog Antenna	Schwarzbeck	VULB9168	N/A	Oct. 17, 2022	Oct. 21, 2023
2	Loop Antenna	TESEQ	HLA6121	58357	Oct. 17, 2022	Oct. 21, 2023
3	Test Cable	N/A	R-01	N/A	Oct. 17, 2022	Oct. 21, 2023
4	Test Cable	N/A	R-02	N/A	Oct. 17, 2022	Oct. 21, 2023
5	EMI Test Receiver (9kHz-7GHz)	R&S	ESCI7	101169	Oct. 17, 2022	Oct. 21, 2023
6	Antenna Mast	EM	SC100_1	N/A	N/A	N/A
7	Turn Table	EM	SC100	N/A	N/A	N/A
8	Spectrum Analyzer	KEYSIGHT	9020A	MY55370835	Oct. 17, 2022	Oct. 21, 2023
9	Amplifier (30-1000MHz)	EM Electronics	EM330 Amplifier	060747	Oct. 17, 2022	Oct. 21, 2023
10	D.C. Power Supply	LongWei	TPR-6405D	N/A	\	\
11	EMC Software	Frad	EZ-EMC	Ver.EMC-CO N 3A1.1	\	\
12	Turntable	MF	MF-7802BS	N/A	\	\
13	Antenna tower	MF	MF-7802BS	N/A	\	\

Harmonic / Flicker Test

Item	Kind of Equipment	Manufacturer	Type No.	Serial No.	Last calibration	Calibrated until
1	Harmonic & Flicker	LAPLACE INSTRUMENTS	C2000A	311370	Oct. 17, 2022	Oct. 21, 2023
2	AC Power Source	LAPLACE INSTRUMENTS	C2000A	311370	Oct. 17, 2022	Oct. 21, 2023

Electrostatic discharge Test

Item	Kind of Equipment	Manufacturer	Type No.	Serial No.	Last calibration	Calibrated until
1	ESD TEST GENERATOR	HTEC	HESD16	N/A	Oct. 17, 2022	Oct. 21, 2023



EFT and Surge and Voltage dips and interruptions Test

Item	Kind of Equipment	Manufacturer	Type No.	Serial No.	Last calibration	Calibrated until
1	Surge Generator	HTEC	HCOMPACT5	202501	Oct. 17, 2022	Oct. 21, 2023
2	DIPS Generator	HTEC	HV1P16T	202101	Oct. 17, 2022	Oct. 21, 2023
3	EFT/B Generator	HTEC	HCOMPACT5	202501	Oct. 17, 2022	Oct. 21, 2023
4	EFT/B Clamp	HTEC	H3C	N/A	Oct. 17, 2022	Oct. 21, 2023

For Magnetic Field Immunity Test

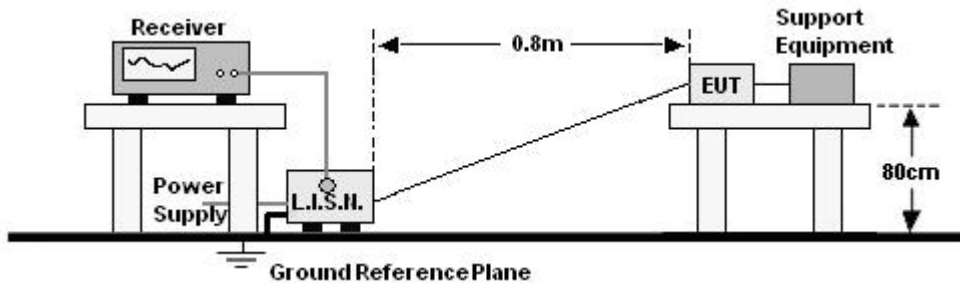
Item	Kind of Equipment	Manufacturer	Type No.	Serial No.	Last calibration	Calibrated until
1	Generator	HTEC	HFMG 100	202602	Oct. 17, 2022	Oct. 21, 2023



3. CONDUCTED EMISSIONS

3.1 Block Diagram Of Test Setup

For mains ports:



3.2 Limit

Limits for Conducted emissions at the mains ports of Class B MME

Frequency range (MHz)	Limits dB(μV)	
	Quasi-peak	Average
0,15 to 0,50	66 to 56*	56 to 46*
0,50 to 5	56	46
5 to 30	60	50

Notes: 1. *Decreasing linearly with logarithm of frequency.
2. The lower limit shall apply at the transition frequencies.

3.3 Test procedure

For mains ports:

- The Product was placed on a nonconductive table 0.8 m above the horizontal ground reference plane, and 0.4 m from the vertical ground reference plane, and connected to the main through Line Impedance Stability Network (L.I.S.N).
- The RBW of the receiver was set at 9 kHz in 150 kHz ~ 30MHz with Peak and AVG detector in Max Hold mode. Run the receiver's pre-scan to record the maximum disturbance generated from Product in all power lines in the full band.
- For each frequency whose maximum record was higher or close to limit, measure its QP and AVG values and record.



3.4 Test Result

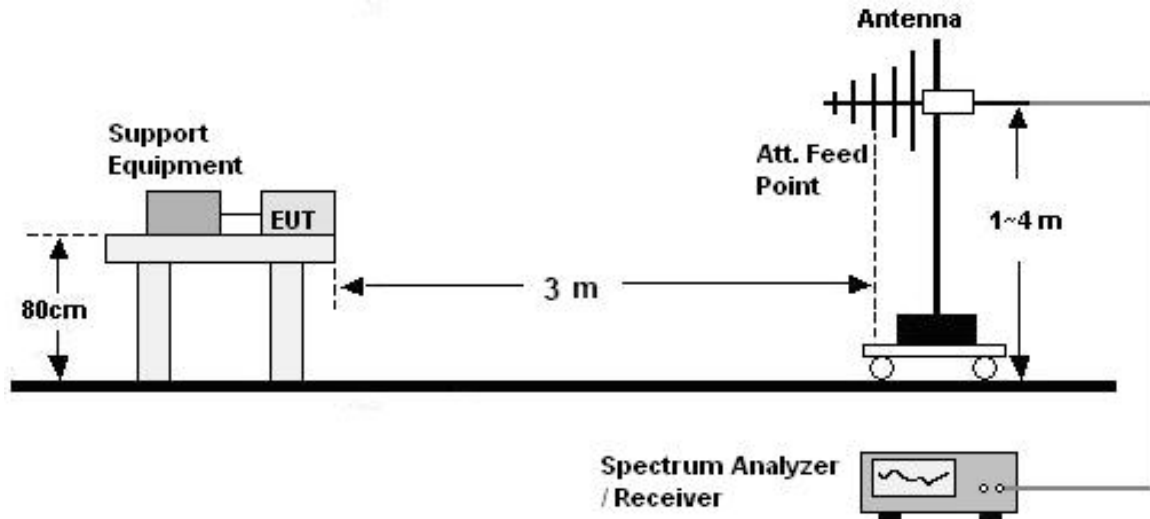
The EUT is powered by DC only. The test items is not applicable.



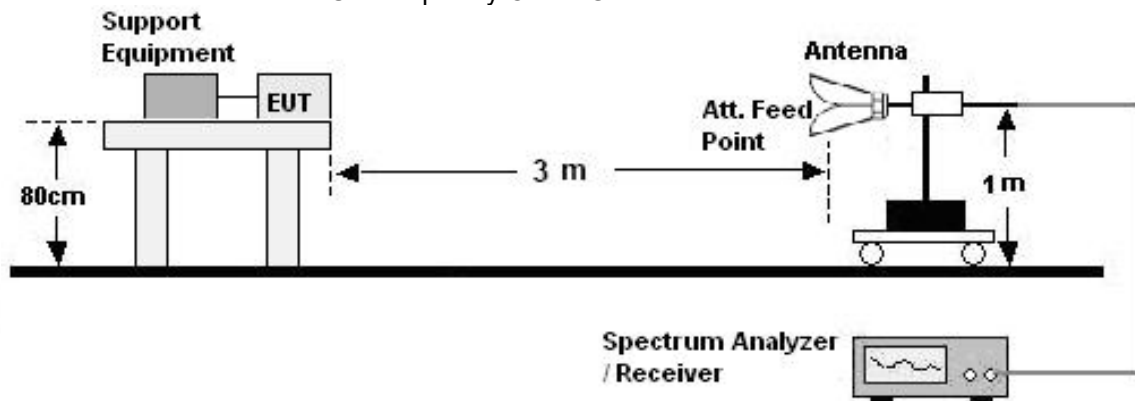
4. RADIATED EMISSIONS TEST

4.1 Block Diagram Of Test Setup

(A) Radiated Emission Test Set-UP Frequency 30MHz-1GHz



(B) Radiated Emission Test Set-UP Frequency Over 1GHz



4.2 Limits

Limits for radiated disturbance of Class B MME

Frequency (MHz)	Quasi-peak limits at 3m dB(μ V/m)
30-230	40
230-1000	47

FREQUENCY (MHz)	Class B (at 3m) dB μ V/m	
	Peak	Avg
1000-3000	70	50
3000-6000	74	54



4.3 Test Procedure

30MHz ~ 1GHz:

- a. The Product was placed on the nonconductive turntable 0.8 m above the ground in a semi anechoic chamber.
- b. Set the spectrum analyzer/receiver in Peak detector, Max Hold mode, and 120 kHz RBW. Record the maximum field strength of all the pre-scan process in the full band when the antenna is varied between 1~4 m in both horizontal and vertical, and the turntable is rotated from 0 to 360 degrees.
- c. For each frequency whose maximum record was higher or close to limit, measure its QP value: vary the antenna's height and rotate the turntable from 0 to 360 degrees to find the height and degree where Product radiated the maximum emission, then set the test frequency analyzer/receiver to QP Detector and specified bandwidth with Maximum Hold Mode, and record the maximum value.

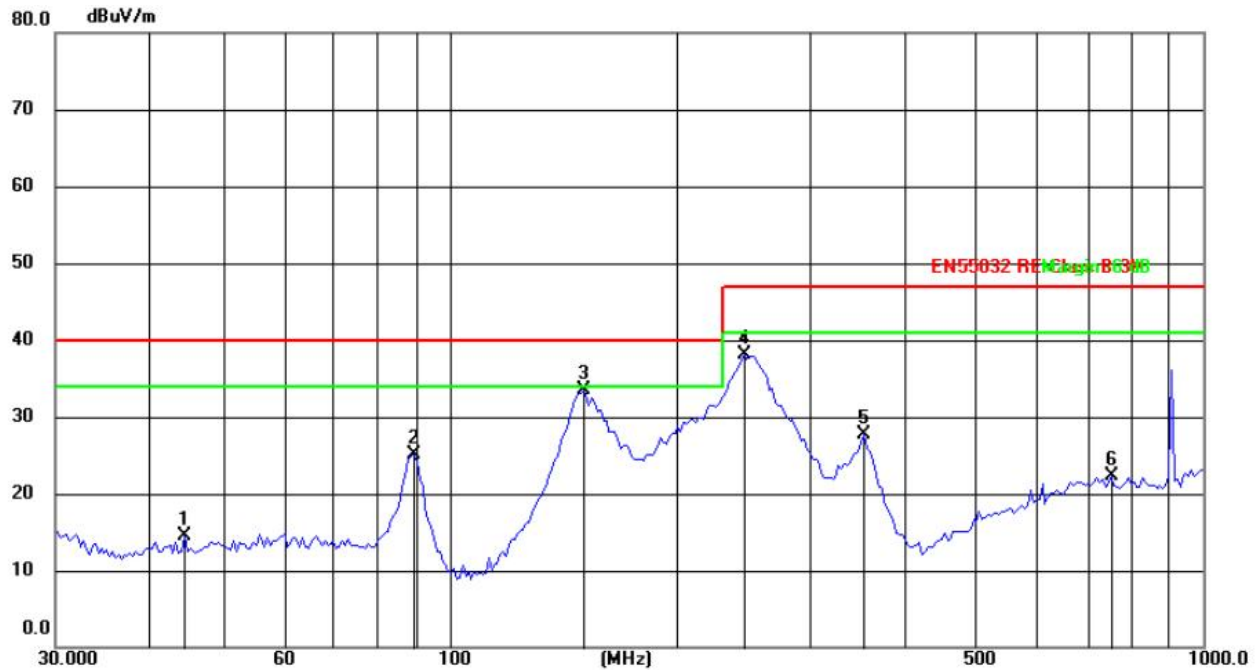
Above 1GHz:

- a. The Product was placed on the non-conductive turntable 0.8 m above the ground in a full anechoic chamber..
- b. Set the spectrum analyzer/receiver in Peak detector, Max Hold mode, and 1MHz RBW. Record the maximum field strength of all the pre-scan process in the full band when the antenna is varied in both horizontal and vertical, and the turntable is rotated from 0 to 360 degrees.
- c. For each frequency whose maximum record was higher or close to limit, measure its AV value: rotate the turntable from 0 to 360 degrees to find the degree where Product radiated the maximum emission, then set the test frequency analyzer/receiver to AV value and specified bandwidth with Maximum Hold Mode, and record the maximum value.



4.4 Test Results

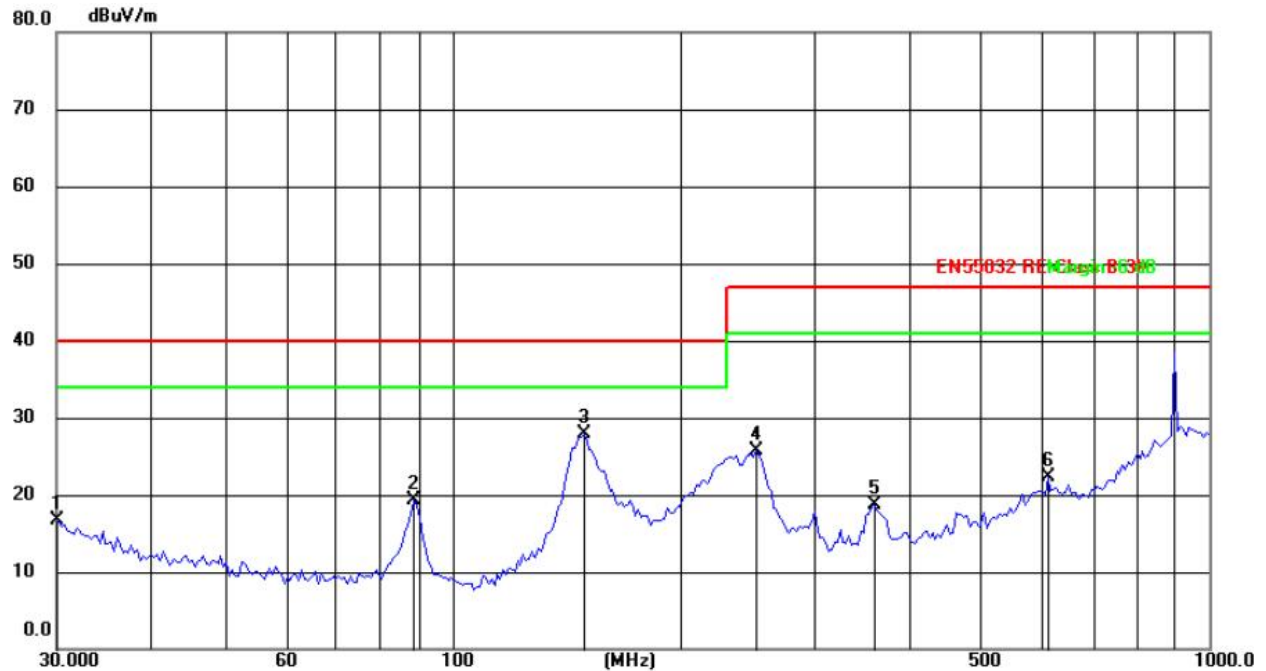
Radiated Emissions Test Data			
Temperature:	23.8℃	Relative Humidity:	42%
Pressure:	1009hPa	Phase :	Horizontal
Test Voltage :	DC 5V	Test Mode:	Working



No.	Frequency (MHz)	Reading (dBuV)	Factor (dB/m)	Level (dBuV/m)	Limit (dBuV/m)	Margin (dB)	Detector
1	44.5087	28.52	-14.09	14.43	40.00	-25.57	QP
2	89.7471	45.35	-20.18	25.17	40.00	-14.83	QP
3	150.5377	49.97	-16.54	33.43	40.00	-6.57	QP
4	245.9509	54.06	-16.05	38.01	47.00	-8.99	QP
5	355.4272	44.37	-16.75	27.62	47.00	-19.38	QP
6	755.3872	29.08	-6.85	22.23	47.00	-24.77	QP



Radiated Emissions Test Data			
Temperature:	23.8℃	Relative Humidity:	42%
Pressure:	1009hPa	Phase :	Vertical
Test Voltage :	DC 5V	Test Mode:	Working

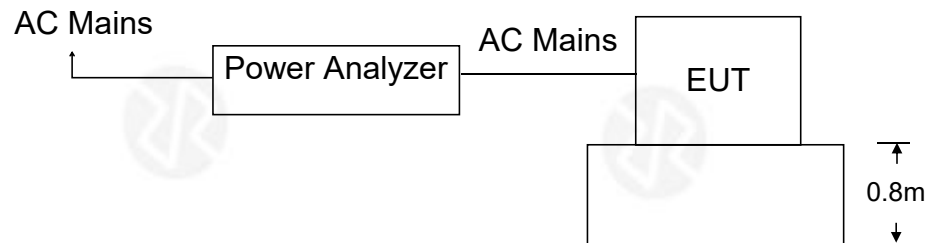


No.	Frequency (MHz)	Reading (dBuV)	Factor (dB/m)	Level (dBuV/m)	Limit (dBuV/m)	Margin (dB)	Detector
1	30.2641	35.12	-18.40	16.72	40.00	-23.28	QP
2	88.9637	40.75	-21.54	19.21	40.00	-20.79	QP
3	149.2238	48.48	-20.59	27.89	40.00	-12.11	QP
4	252.5050	45.51	-19.89	25.62	47.00	-21.38	QP
5	361.7138	34.91	-16.30	18.61	47.00	-28.39	QP
6	612.0641	29.99	-7.76	22.23	47.00	-24.77	QP



5. HARMONIC CURRENT EMISSION TEST

5.1 Block Diagram of Test Setup



5.2 Test Standard

EN IEC 61000-3-2:2019/A1:2021

5.3 Operating Condition of EUT

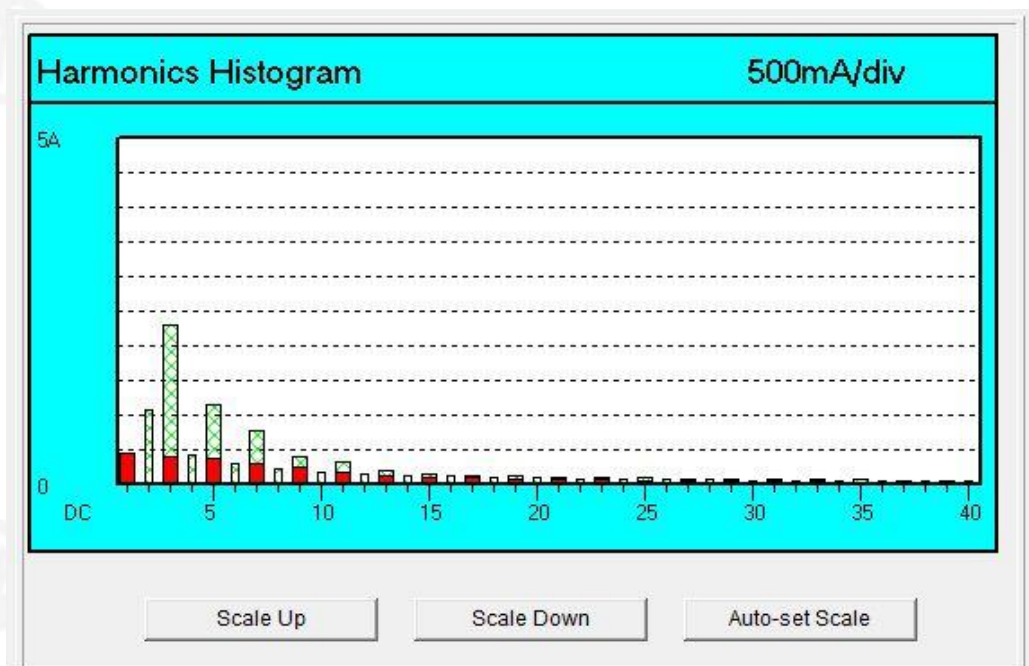
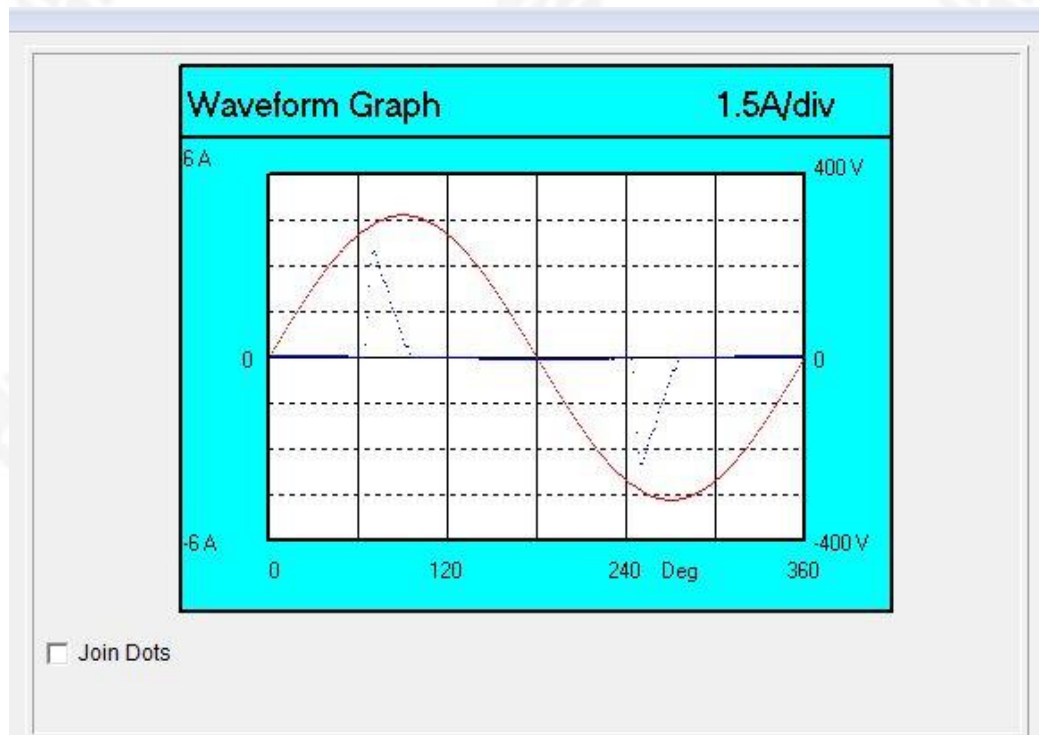
- 5.3.1 Setup the EUT as shown in Section 6.1.
- 5.3.2 Turn on the power of all equipment.
- 5.3.3 Let the EUT work in test mode and test it.

5.4 Test Procedure

The power cord of the EUT is connected to the output of the test system. Turn on the power of the EUT and use the test system to test the harmonic current level.

5.5 Test Results

PASS
Please refer to the following page.





N	Filtered	Limit	Avg.	%Limit	Max.	%Limit	N	Filtered	Limit	Avg.	%Limit	Max.	%Limit
1	446.7			-		-	2	2.3	1080.0	2.5	0.2	2.8	0.3
3	411.8	2300.0	411.3	17.9	411.8	17.9	4	2.3	430.0	2.4	0.6	2.6	0.6
5	366.4	1140.0	366.0	32.1	366.6	32.2	6	2.3	300.0	2.5	0.8	2.6	0.9
7	306.9	770.0	306.5	39.8	307.3	39.9	8	2.1	230.0	2.6	1.1	2.8	1.2
9	241.3	400.0	241.0	60.3	241.8	60.5	10	2.3	184.0	2.6	1.4	3.0	1.6
11	179.6	330.0	179.3	54.3	180.1	54.6	12	2.5	153.3	2.7	1.8	3.0	2.0
13	130.7	210.0	130.4	62.1	131.0	62.4	14	2.5	131.4	2.8	2.1	3.2	2.4
15	101.6	150.0	101.2	67.5	101.7	67.8	16	2.5	115.0	2.8	2.4	3.2	2.8
17	89.7	132.3	89.4	67.6	90.0	68.0	18	2.5	102.2	2.8	2.7	3.2	3.1
19	84.3	118.4	84.0	70.9	84.5	71.4	20	2.5	92.0	2.7	2.9	3.2	3.5
21	76.9	107.1	76.7	71.6	77.3	72.2	22	2.6	83.6	2.7	3.2	3.0	3.6
23	66.8	97.8	66.7	68.2	67.0	68.5	24	2.5	76.7	2.6	3.4	3.0	3.9
25	56.6	90.0	56.4	62.7	56.8	63.1	26	2.5	70.8	2.5	3.5	2.8	4.0
27	49.2	83.3	49.0	58.8	49.4	59.3	28	2.5	65.7	2.5	3.8	2.8	4.3
29	45.3	77.6	45.0	58.0	45.4	58.5	30	2.3	61.3	2.4	3.9	2.6	4.2
31	42.6	72.6	42.4	58.4	42.7	58.8	32	1.9	57.5	2.1	3.7	2.5	4.3
33	39.0	68.2	38.7	56.7	39.0	57.2	34	1.7	54.1	2.0	3.7	2.3	4.3
35	34.1	64.3	33.9	52.7	34.1	53.0	36	1.6	51.1	1.8	3.5	2.1	4.1
37	29.3	60.8	29.1	47.9	29.3	48.2	38	1.4	48.4	1.6	3.3	1.9	3.9
39	25.7	57.7	25.5	44.2	25.7	44.5	40	1.4	46.0	1.6	3.5	1.7	3.7
P	155.3	251.4	154.5	61.5	155.5	61.9					-		-



6. VOLTAGE FLUCTUATIONS & FLICKER TEST

6.1 Block Diagram of Test Setup

Same as Section 6.1.

6.2 Test Standard

EN 61000-3-3:2013/A2:2021/AC:2022-01

6.3 Operating Condition of EUT

Same as Section 5.3.. The power cord of the EUT is connected to the output of the test system. Turn on the power of the EUT and use the test system to test the harmonic current level.

Flicker Test Limit

Test items	Limits
Pst	1.0
dc	3.3%
dmax	4.0%
dt	Not exceed 3.3% for 500ms

6.4 Test Procedure

The power cord of the EUT is connected to the output of the test system. Turn on the power of the EUT and use the test system to test the harmonic current level.

6.5 Test Results

The EUT is powered by DC only. The test items is not applicable.



7. IMMUNITY TEST OF GENERAL THE PERFORMANCE CRITERIA

Product Standard	EN 55035:2017+A11:2020 clause 5
CRITERION A	<p>The equipment shall continue to operate as intended without operator intervention. No degradation of performance, loss of function or change of operating state is allowed below a performance level specified by the manufacturer when the equipment is used as intended. The performance level may be replaced by a permissible loss of performance. If the minimum performance level or the permissible performance loss is not specified by the manufacturer, then either of these may be derived from the product description and documentation, and by what the user may reasonably expect from the equipment if used as intended.</p>
CRITERION B	<p>During the application of the disturbance, degradation of performance is allowed. However, no unintended change of actual operating state or stored data is allowed to persist after the test.</p> <p>After the test, the equipment shall continue to operate as intended without operator intervention; no degradation of performance or loss of function is allowed, below a performance level specified by the manufacturer, when the equipment is used as intended. The performance level may be replaced by a permissible loss of performance.</p> <p>If the minimum performance level (or the permissible performance loss), or recovery time, is not specified by the manufacturer, then either of these may be derived from the product description and documentation, and by what the user may reasonably expect from the equipment if used as intended.</p>
CRITERION C	<p>Loss of function is allowed, provided the function is self-recoverable, or can be restored by the operation of the controls by the user in accordance with the manufacturer's instructions. A reboot or re-start operation is allowed.</p> <p>Information stored in non-volatile memory, or protected by a battery backup, shall not be lost.</p>

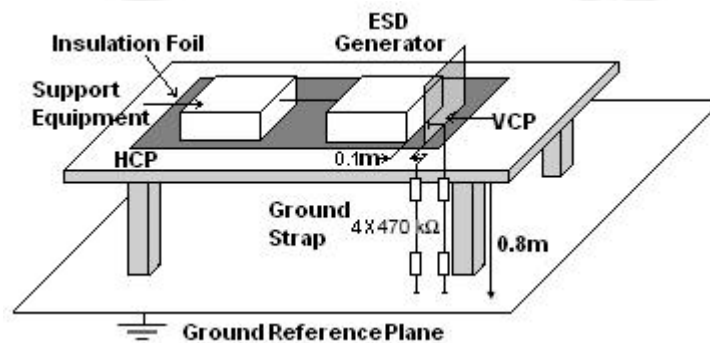


8. ELECTROSTATIC DISCHARGE (ESD)

8.1 Test Specification

Test Port	: Enclosure port
Discharge Impedance	: 330 ohm / 150 pF
Discharge Mode	: Single Discharge
Discharge Period	: one second between each discharge

8.2 Block Diagram of Test Setup



8.3 Test Procedure

- Electrostatic discharges were applied only to those points and surfaces of the Product that are accessible to users during normal operation.
- The test was performed with at least ten single discharges on the pre-selected points in the most sensitive polarity.
- The time interval between two successive single discharges was at least 1 second.
- The ESD generator was held perpendicularly to the surface to which the discharge was applied and the return cable was at least 0.2 meters from the Product.
- Contact discharges were applied to the non-insulating coating, with the pointed tip of the generator penetrating the coating and contacting the conducting substrate.
- Air discharges were applied with the round discharge tip of the discharge electrode approaching the Product as fast as possible (without causing mechanical damage) to touch the Product. After each discharge, the ESD generator was removed from the Product and re-triggered for a new single discharge. The test was repeated until all discharges were complete.
- At least ten single discharges (in the most sensitive polarity) were applied to the center of one vertical edge of the Vertical Coupling Plane in sufficiently different positions that the four faces of the Product were completely illuminated. The VCP (dimensions 0.5m x 0.5m) was placed vertically to and 0.1 meters from the Product.



8.4 Test Results

Discharge Method	Discharge Position	Voltage (±kV)	Min. No. of Discharge per polarity (Each Point)	Required Level	Performance Criterion
Contact Discharge	Conductive Surfaces	4	10	B	A
	Indirect Discharge HCP	4	10	B	A
	Indirect Discharge VCP	4	10	B	A
Air Discharge	Slots, Apertures, and Insulating Surfaces	8	10	B	A
Note: N/A					



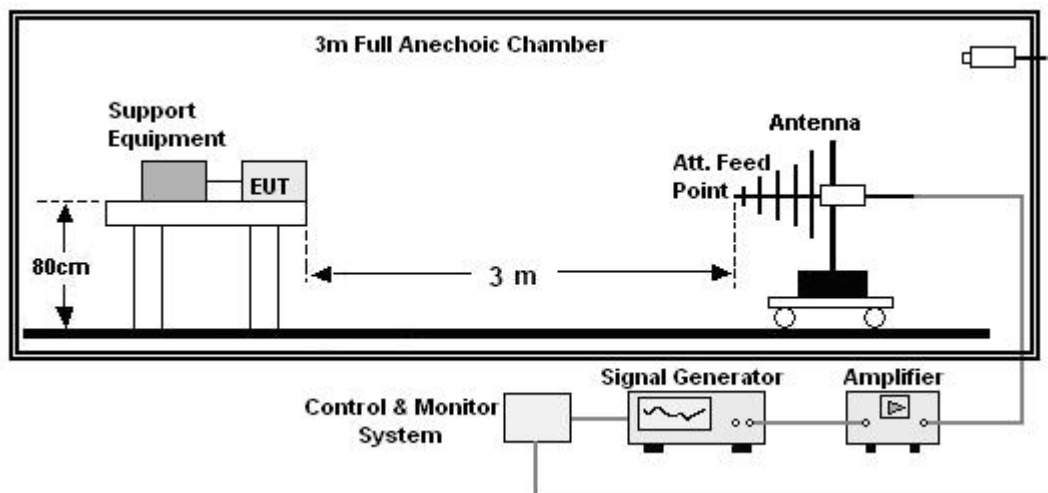
9. CONTINUOUS RF ELECTROMAGNETIC FIELD DISTURBANCES(RS)

9.1 Test Specification

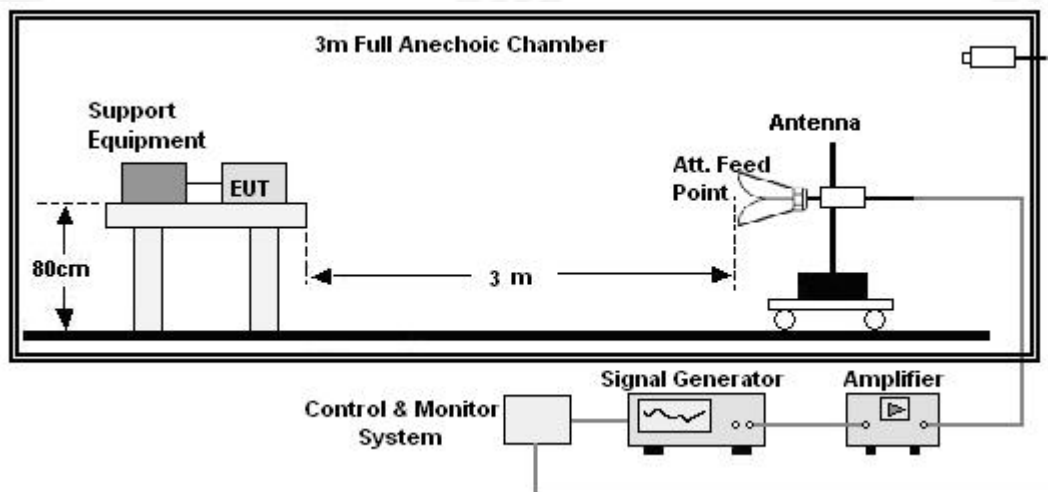
Test Port	: Enclosure port
Step Size	: 1%
Modulation	: 1kHz, 80% AM
Dwell Time	: 1 second
Polarization	: Horizontal & Vertical

9.2 Block Diagram of Test Setup

Below 1GHz:



Above 1GHz:





9.3 Test Procedure

- a. The testing was performed in a fully-anechoic chamber. The transmit antenna was located at a distance of 3 meters from the Product.
- b. The frequency range is swept from 80MHz to 1000MHz, 1800MHz, 2600MHz, 3500MHz, 5000MHz, with the signal 80% amplitude modulated with a 1 kHz sine wave, and the step size was 1%.
- c. The dwell time at each frequency shall not be less than the time necessary for the EUT to be exercised and to be able to respond, but should not exceed 5 s at each of the frequencies during the scan.
- d. The test was performed with the Product exposed to both vertically and horizontally polarized fields on each of the four sides.
- e. For Broadcast reception function: Group 2 not apply in this test.

9.4 Test Results

Frequency	Position	Field Strength (V/m)	Required Level	Performance Criterion
80 - 1000MHz, 1800MHz, 2600MHz, 3500MHz, 5000MHz	Front, Right, Back, Left	3	A	A
Note: The EUT is the testing item(s) was (were) fulfilled by subcontracted lab SHENZHEN HAIYUN TESTING CO.,LTD				



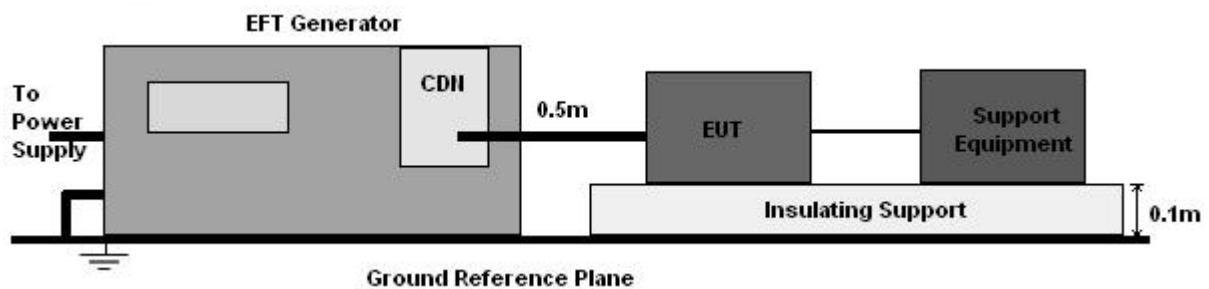
10. ELECTRICAL FAST TRANSIENTS/BURST (EFT)

10.1 Test Specification

Test Port	: input a.c. power port
Impulse Frequency	: 5 kHz
Impulse Wave-shape	: 5/50 ns
Burst Duration	: 15 ms
Burst Period	: 300 ms
Test Duration	: 2 minutes per polarity

10.2 Block Diagram of EUT Test Setup

For input a.c. power port:



10.3 Test Procedure

- The Product and support units were located on a non-conductive table above ground reference plane.
- A 0.5m-long power cord was attached to Product during the test.

10.4 Test Results

The EUT is powered by DC only. The test items is not applicable.

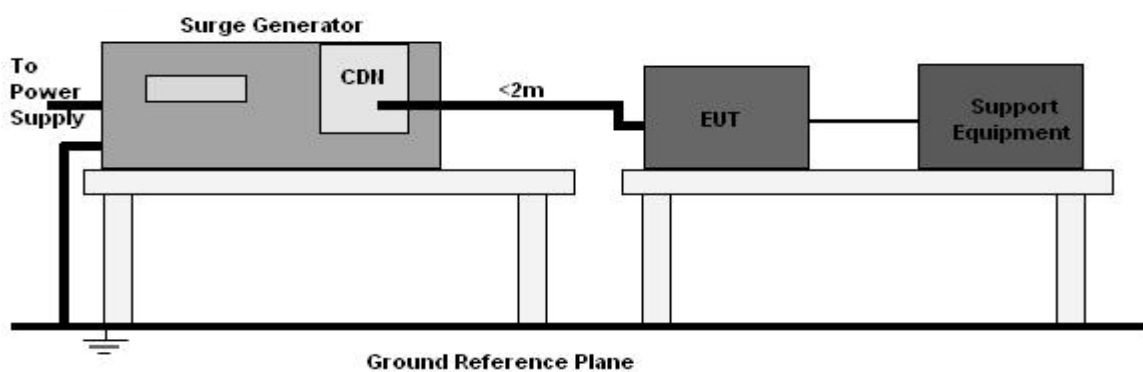


11. SURGES IMMUNITY TEST

11.1 Test Specification

Test Port	:	input a.c. power port
Wave-Shape	:	Open Circuit Voltage - 1.2 / 50 us Short Circuit Current - 8 / 20 us
Pulse Repetition Rate	:	1 pulse / min.
Phase Angle	:	0° / 90° / 180° / 270°
Test Events	:	5 pulses (positive & negative) for each polarity

11.2 Block Diagram of EUT Test Setup



11.3 Test Procedure

- The surge is to be applied to the Product power supply terminals via the capacitive coupling network. Decoupling networks are required in order to avoid possible adverse effects on equipment not under test that may be powered by the same lines, and to provide sufficient decoupling impedance to the surge wave.
- The power cord between the Product and the coupling/decoupling networks shall be 2 meters in length (or shorter). Interconnection line between the Product and the coupling/decoupling networks shall be 2 meters in length (or shorter).

11.4 Test Result

Coupling Line	Voltage (kV)	Phase Angle	Required Level	Performance Criterion
L - N	+1	90°	B	A
	-1	270°	B	A
Note: N/A				



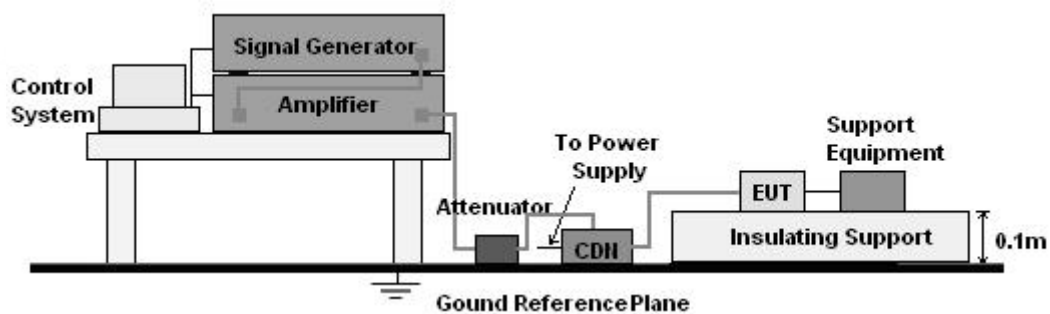
12. CONTINUOUS INDUCED RF DISTURBANCES (CS)

12.1 Test Specification

Test Port	: input a.c. power port
Step Size	: 1%
Modulation	: 1kHz, 80% AM
Dwell Time	: 1 second

12.2 Block Diagram of EUT Test Setup

For input a.c. power port:



12.3 Test Procedure

For input a.c. power port:

- The Product and support units were located at a ground reference plane with the interposition of a 0.1 m thickness insulating support and the CDN was located on GRP directly.
- The frequency range is swept from 150 kHz to 10MHz, 10MHz to 30MHz, 30MHz to 80MHz with the signal 80% amplitude modulated with a 1 kHz sine wave, and the step size was 1% of fundamental.
- The dwell time at each frequency shall be not less than the time necessary for the Product to be able to respond.

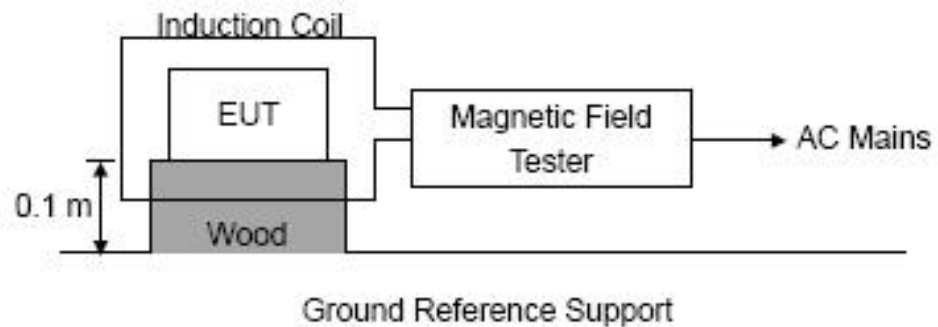
12.4 Test Result

The EUT is powered by DC only. The test items is not applicable.



13. MAGNETIC FIELD IMMUNITY TEST

13.1 Block Diagram of Test Setup



13.2 Test Standard

EN 55035:2017+A11:2020, EN61000-4-8:2010
Severity Level 1 at 1A/m

13.3 Severity Levels and Performance Criterion

13.3.1 Severity level

Level	Magnetic Field Strength A/m
1.	1
2.	3
3.	10
4.	30
5.	100
X.	Special

13.3.2 Performance criterion: B

- A. The equipment shall continue to operate as intended without operator intervention. No degradation of performance or loss of function is allowed below a performance level specified by the manufacturer when the equipment is used as intended. The performance level may be replaced by a permissible loss of performance. If the minimum performance level or the permissible performance loss is not specified by the manufacturer, then either of these may be derived from the product description and documentation, and by what the user may reasonably expect from the equipment if used as intended.
- B. After the test, the equipment shall continue to operate as intended without operator intervention. No degradation of performance or loss of function is allowed, after the application of the phenomena below a performance level specified by the manufacturer, when the equipment is used as intended. The performance level may be replaced by a permissible loss of performance. During the test, degradation of performance is allowed. However, no change of



operating state or stored data is allowed to persist after the test.
If the minimum performance level (or the permissible performance loss) is not specified by the manufacturer, then either of these may be derived from the product description and documentation, and by what the user may reasonably expect from the equipment if used as intended.

- C. Loss of function is allowed, provided the function is self-recoverable, or can be restored by the operation of the controls by the user in accordance with the manufacturer's instructions. Functions, and/or information stored in non-volatile memory, or protected by a battery backup, shall not be lost.

13.4 EUT Configuration on Test

The configuration of EUT is listed in Section 2.9.

13.5 Operating Condition of EUT

Same as conducted emission test, which is listed in Section 2.9 except the test set up replaced as Section 12.1.

13.6 Test Procedure

The EUT shall be subjected to the test magnetic field by using the induction coil of standard dimensions (1m*1m) and shown in Section 10.1. The induction coil shall then be rotated by 90° in order to expose the EUT to the test field with different orientations.

13.7 Test Results

PASS

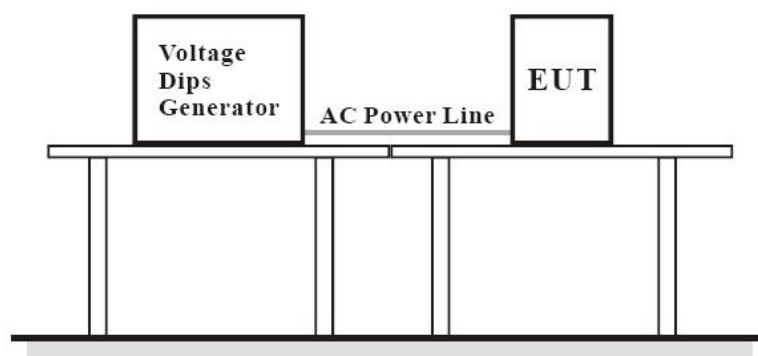
The EUT is powered by DC only. The test items is not applicable.

14. VOLTAGE DIPS AND INTERRUPTIONS (DIPS)

14.1 Test Specification

Test Port	:	input a.c. power port
Phase Angle	:	0°, 180°
Test cycle	:	3 times

14.2 Block Diagram of EUT Test Setup





14.3 Test Procedure

- a. The Product and support units were located on a non-conductive table above ground floor.
- b. Set the parameter of tests and then perform the test software of test simulator.
- c. Conditions changes to occur at 0 degree crossover point of the voltage waveform.

14.4 Test Result

The EUT is powered by DC only. The test items is not applicable.



15. EUT PHOTOGRAPHS

EUT Photo 1

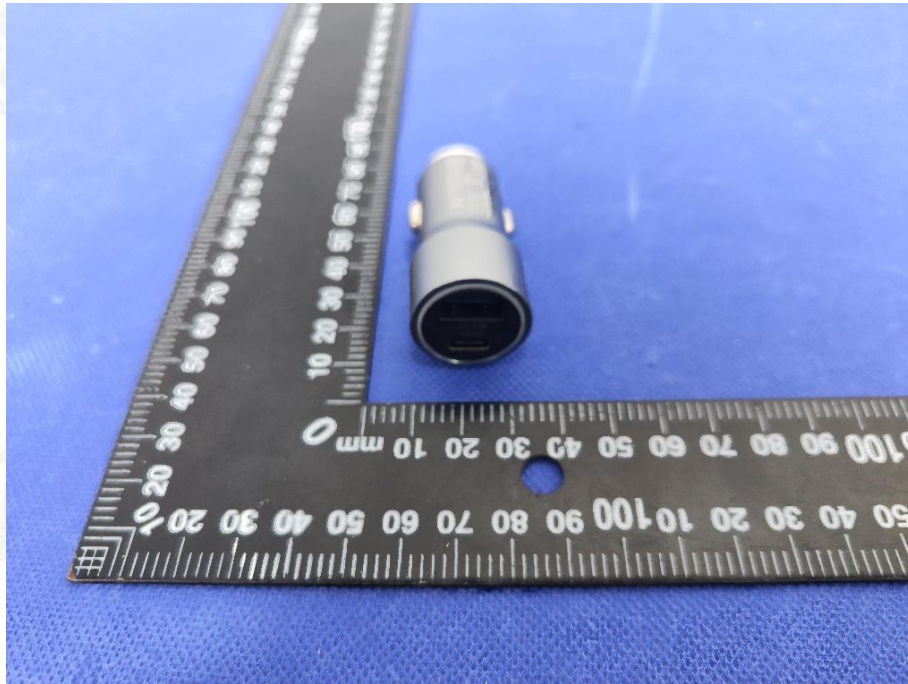


EUT Photo 2

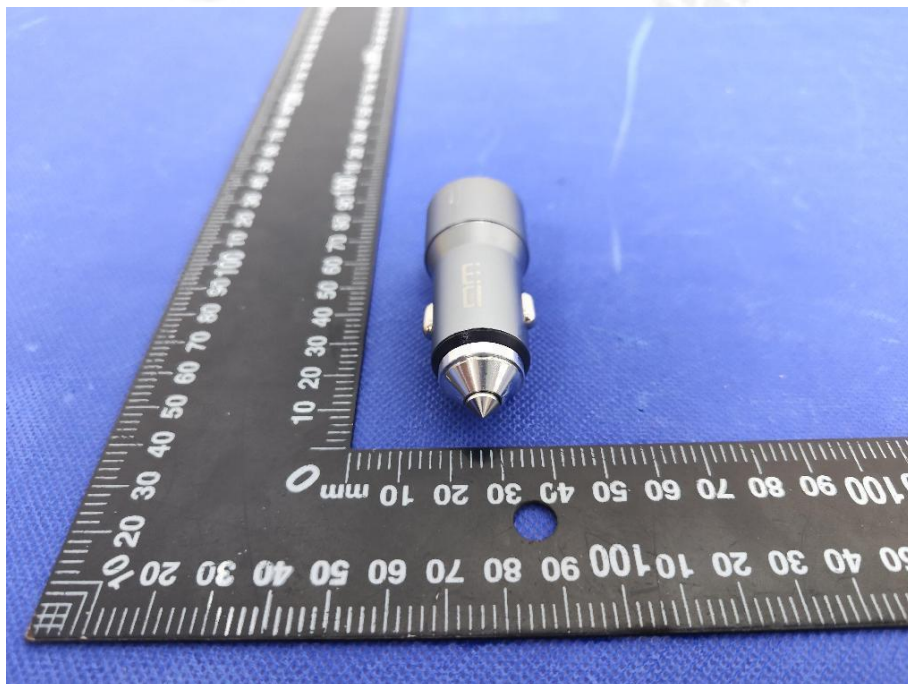




EUT Photo 3

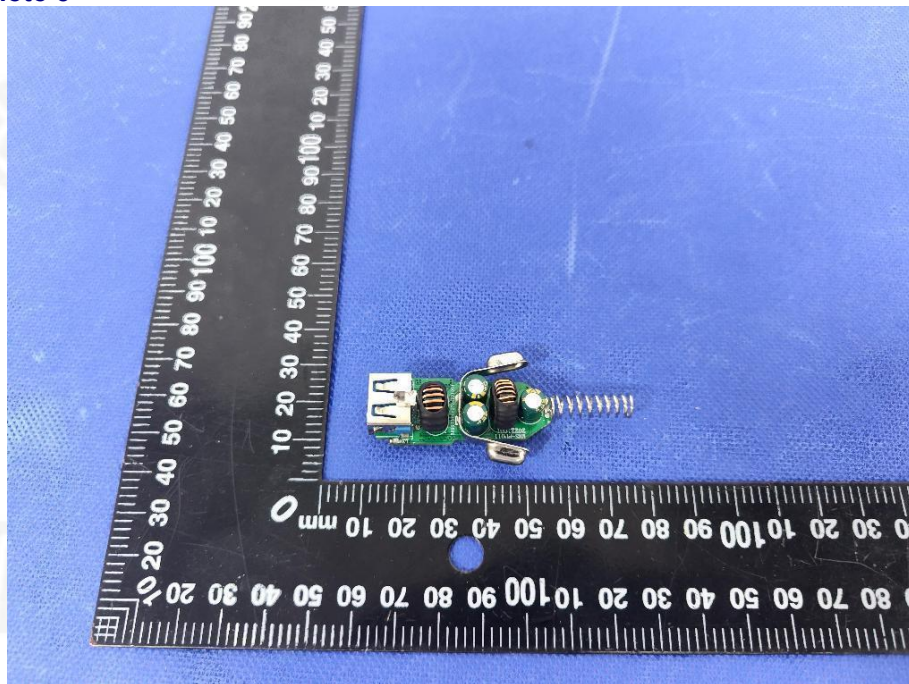


EUT Photo 4

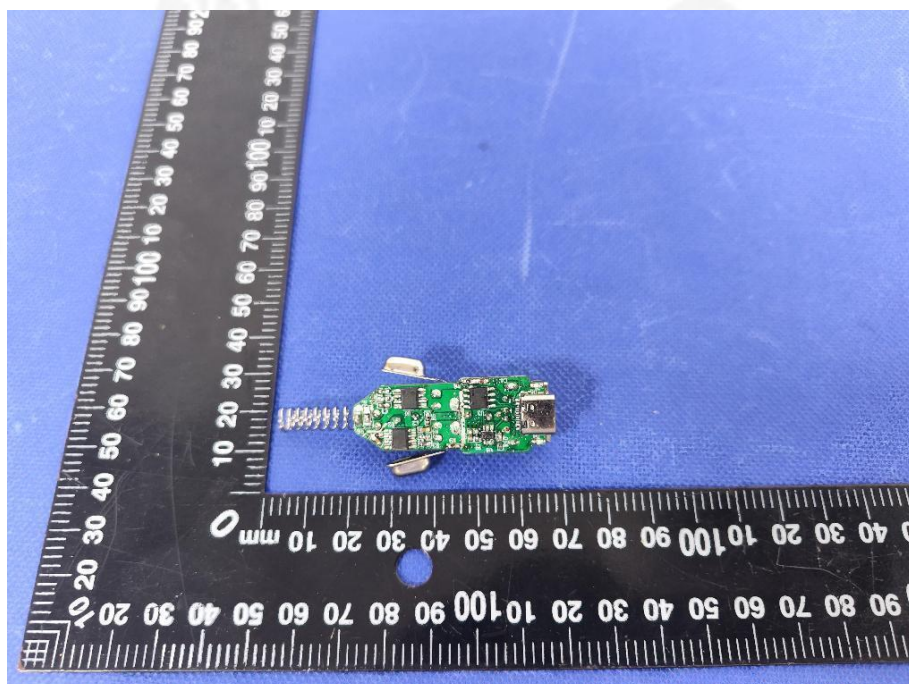




EUT Photo 5



EUT Photo 6





16. EUT TEST PHOTOGRAPHS

RE



***** END OF REPORT *****